

AC-070 Select camera to MAN TGE / VW Crafter adapter cable Installation Guide

System requirements:

For MAN TGE, MAN Media Van Advanced, or MAN Media Van Navigation infotainment must be used.

For VW Crafter, Composition Media or Discover Media navigation systems.

Video transmission must in the NTSC standard and provide a mirror image signal.

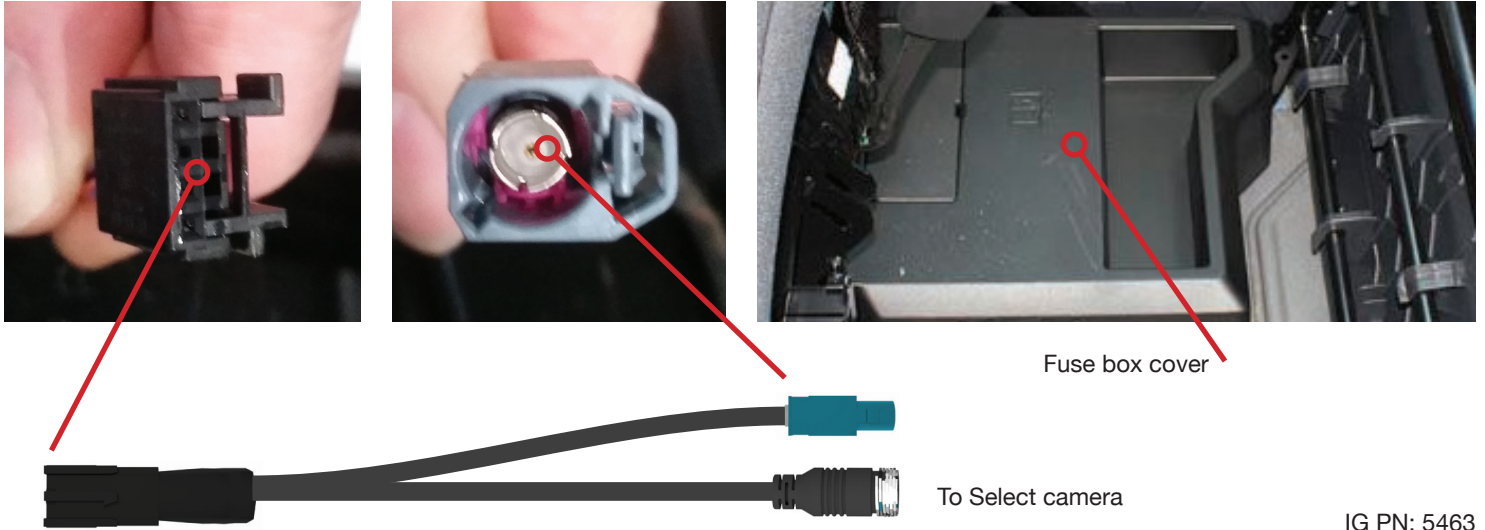
Once the camera has been fitted, the camera input must be activated in the radio, this activation can only be performed by the manufacturing dealer. Camera will operate when reverse is selected.

System connections.

Locate and remove fuse-box cover under left hand seat.

In the loom, locate the Fakra style camera cable connection and the black 4 pin connector.

Connect the AC-070 cable to these connections and to select camera.



AC-070 Select camera to MAN TGE / VW Crafter adapter cable Installation Guide

System requirements:

For MAN TGE, MAN Media Van Advanced, or MAN Media Van Navigation infotainment must be used.

For VW Crafter, Composition Media or Discover Media navigation systems.

Video transmission must in the NTSC standard and provide a mirror image signal.

Once the camera has been fitted, the camera input must be activated in the radio, this activation can only be performed by the manufacturing dealer. Camera will operate when reverse is selected.

System connections.

Locate and remove fuse-box cover under left hand seat.

In the loom, locate the Fakra style camera cable connection and the black 4 pin connector.

Connect the AC-070 cable to these connections and to select camera.

